

NOVAMET

Stainless Steel Flake

Stainless Steel Flake

Novamet Stainless Steel Flake is available as a bright attractive pigment and is ideally suited for applications such as in decorative coatings and high-performance protective paints. Leafing (L) and Water (W) grades are available.

Solvent Systems

Both the leafing and water grades can be used in solvent-based systems. Leafing pigments are capable of concentrating at the surface of a paint film, where particles overlap each other (as shown in the photograph), creating a metallic appearance. Water grade pigments are non-leafing in solvent systems and are randomly dispersed. This allows for light to be reflected off the metallic flakes and display the hue of the transparent color pigment.

A special maintenance grade, Stainless Steel Flake SSC in 10% mineral spirits paste, is also available.

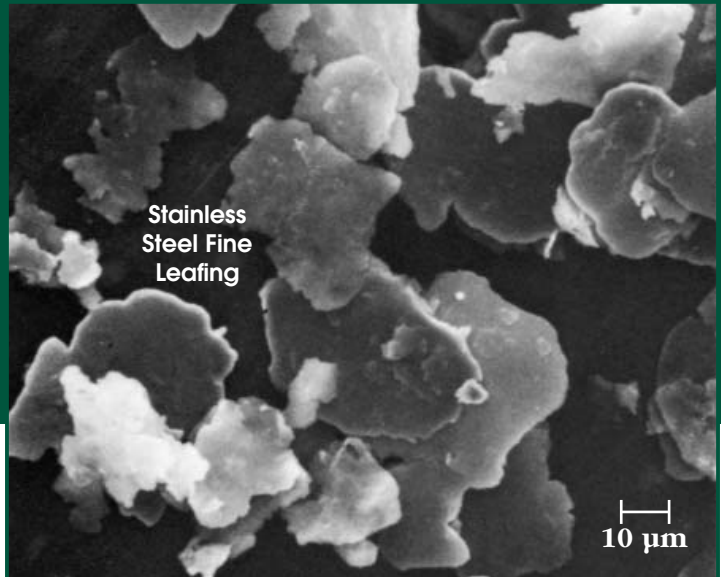
Water-Borne Systems

Novamet Stainless Steel Flake is particularly useful because it will not form hydrogen when incorporated in water-borne coatings and consequently will not cause gassing. It eliminates problems with the popping of can lids. The W grade pigment was specifically formulated for water-borne systems. A special lubricant is used to prevent saponification in water-borne systems.

Applications

- **Powder Coatings.** Automotive trim, wheels and under-the-hood parts, office and outdoor furniture, bicycles.
- **Architectural Coatings.** Provides a stainless steel look to masonry and exposed metal.
- **Maintenance Coatings.** Corrosion protection for food processing plants, transmission towers and equipment exposed to extreme elements.
- **Cookware Coatings.** Promotes abrasion resistance and heat transfer in non-stick coatings.

NOVAMET



The Advantages of Stainless Steel

Novamet Stainless Steel Flake is produced from Type 316L stainless steel. This premium-quality stainless steel combines excellent corrosion resistance with outstanding abrasion resistance and toughness. Not only does it resist salt spray and acid spotting but it is also unaffected by strong alkaline cleaners and detergents. It will not chalk or tarnish. Along with good corrosion resistance, stainless steel flake has high specular reflectance, making it ideally suited for such applications as pigments for powder coatings and high-performance paints.

Lower Explosive Limits. Tests conducted by an independent laboratory show stainless steel to be stable in powder coatings. The US Bureau of Mines categorizes explosion hazards of materials as None, Weak, Moderate, Strong and Severe. Stainless Steel falls into the "none" Category.

Typical Properties of Novamet Stainless Steel Flake

| | Screen Analysis (Mesh) | Apparent Density (g/cm ³) | Flake Thickness (microns) |
|------------------|------------------------|---------------------------------------|---------------------------|
| Fine Leafing | 95% -325 | 0.7 | 0.6 |
| Standard Leafing | 80% +325 | 0.7 | 0.8 |
| Fine Water | 95% -325 | 0.5 | 0.5 |
| Standard Water | 80% +325 | 0.5 | 0.8 |
| SSC Paste | 90% -325 | 0.4 | 0.4 |

Packaging

| U.S. | | Metric | |
|--------------|--------|---------------|--------|
| 1 gal. can | 11 lb | 4 liter can | 5 kg |
| 5 gal. pail | 55 lb | 20 liter pail | 25 kg |
| 15 gal. drum | 220 lb | 60 liter drum | 100 kg |

Note: All containers are lined with a polyurethane bag.

Novamet Specialty Products Corporation
A Vale Inco company
681 Lawlins Road, Wyckoff, NJ 07481
(201) 891-7976 • FAX (201) 891-9467
www.novametcorp.com

NOVAMET Specialty Metal Flakes, Powders, Pigments, Oxides and Coated Products